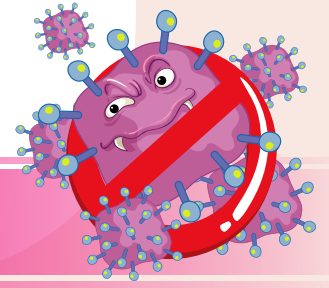




Protocol for Management of **Covid-19** in the Paediatric Age Group



Symptoms of children with Severe Covid-19 disease

Management of children with Severe Covid-19 disease:

Children with SpO2 level less than 90% are categorized as having severe degree of Covid-19 infection.

Such children may be having severe

- **Pneumonia,**
- **Acute Respiratory Distress Syndrome,**
- **Septic Shock,**
- **Multi-organ dysfunction syndrome (MODS),**
- **Pneumonia with Cyanosis.**

Clinically, such children may present with

- **Grunting,**
- **Severe retraction of chest,**
- **Lethargy,**
- **Somnolence,**
- **Seizure.**



Identified Covid-19 positive patients should follow the issued guidelines at mohfw.gov.in

For further information on, "Protocol for Management of Covid-19 in the Paediatric Age Group" visit mohfw.gov.in/pdf/GuidelinesforManagementofCOVID19inCHILDREN18June2021final.pdf or scan-

